



K.K. ROCKY

COMPANY PROFILE 2013



ISO9001
2008年版



ISO14001
2004年版



Company Profile

Established : 1972

Capital : JPY 92M (US\$868K)

Business : 1.In-house developed Products, Various Electronic equipment & Boards selling.

2.Various Electronic equipment & Boards Developing, Designing & Manufacturing for industry

- Developing & Designing Image processing & DSP boards
- OEM Manufacturing Telecommunication Electronic equipment and Contracted Designing & Manufacturing

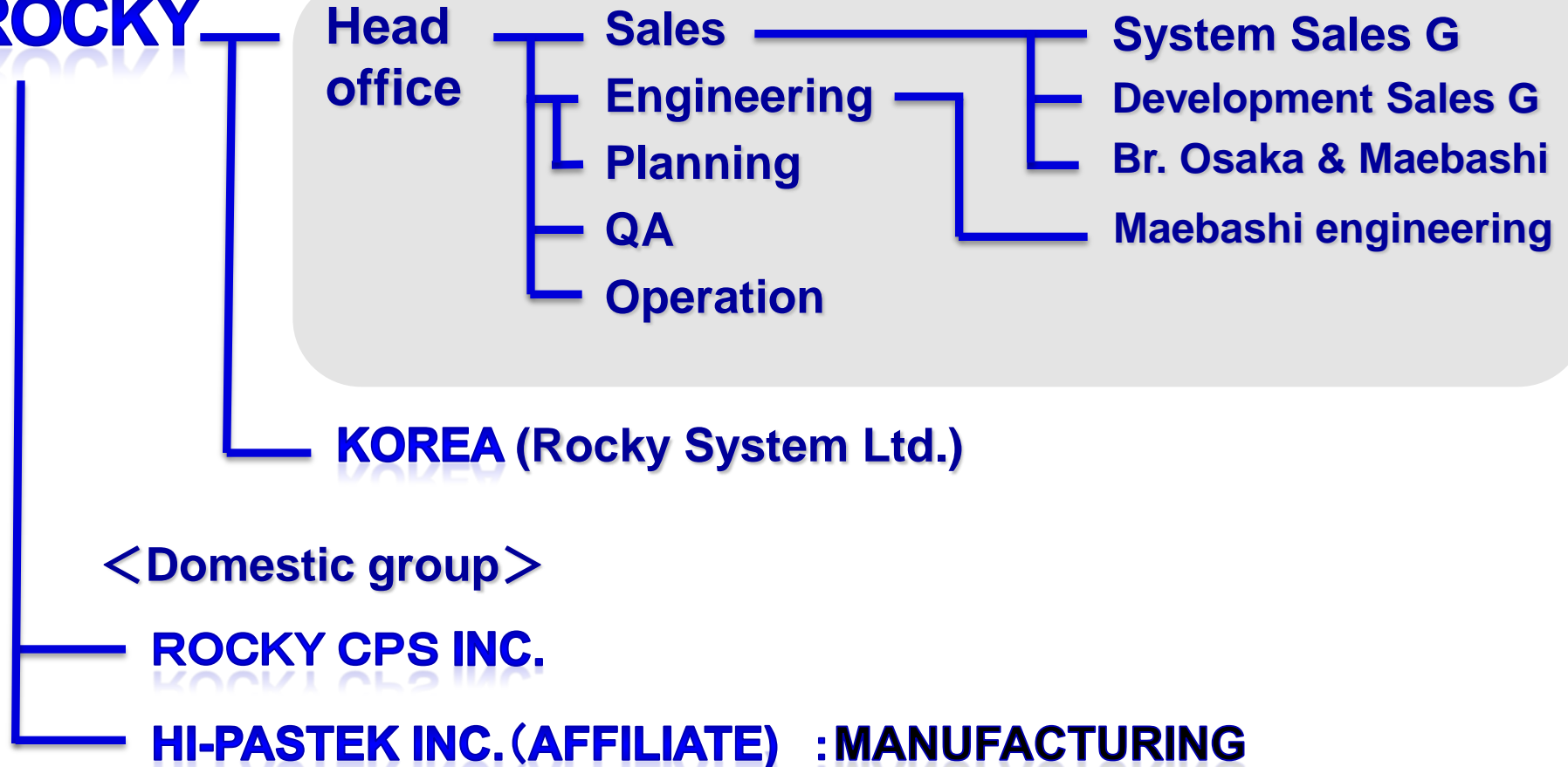
3.Sales of Imported / Domestic various Electric Boards for industry

Employee : 80 employees (K.K.Rocky: 50, Hi-Pastek: 30)



Organization

K.K.ROCKY



Major Account



OMRON

JEOL



MITSUBISHI
Changes for the Better



OLYMPUS

HITACHI
Inspire the Next

OKI

TOSHIBA

HOYA

YOKOGAWA 

NEC

Anritsu

FUJITSU

Canon

 NTT

 TOPCON



Our Business

We have the two functions of the manufacturer and the trading Firm. Providing a total service from the development design to manufacturing.

As Manufacturer

- Development and design of product
- Meet customer's needs
- Manufacturing and inspection at our own factory
- Providing technical service

As Trading Firm

- Domestic and Foreign vender's distributor.
- Providing the cutting edge of technology and product.
- Embedding it as material for custom product developing.
- Providing an as-is products of Low cost & Hi-perfomance.

**Development and Design
Service**

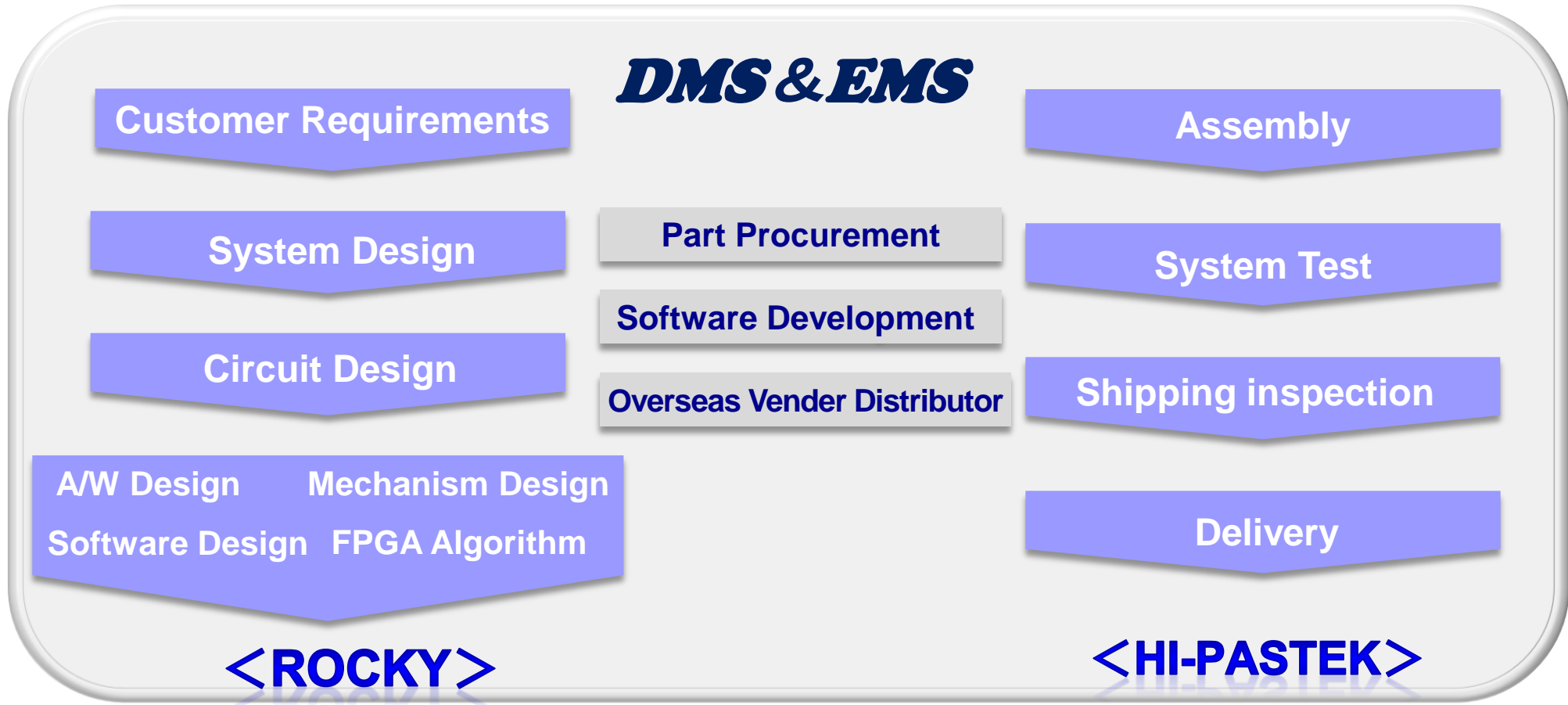
**Technical Support
Service**

**Manufacturing
Service**



Total Solution

One-stop service is providing as it is DMS (Design & Manufacturing Service) from Development, Design and Manufacturing to Sales of an electronic equipment which we can tailor it to your needs.





Features of Development & Design

- **Basic Design of the Large scale & High performance Circuit based on DSP(Analog Devices, Texas Instruments)-FPGA(Altera, Xilinx).**
- **Providing successfully PCB design reflected appropriately a Design intent performed Art-work one by our Circuit designer himself or In-house professional engineer**
- **Implement Boundary Scan Test method for Digital PCB of In-house development and Contracted customize board, because it is very difficult testing to be High density, lighter, more compact for Digital boards.**
- **Incorporate the latest technology in the design to make it easy to manufacture, to test and to source parts.**



Development Results of A/D Board



	Card 1	Card 2	Card 3	Card 4	Card 5
Resolution	14bits	16bit	16bits	14bit	16bit
Sample Rate	400MS	200MS	133MS	50MS	105MS
Channels	2ch	4ch	2ch	64ch	10ch
Card Size	PCI-express	PCI-express	CPCI	9U	FMC
Data Storage	DDR2_SDRAM	DDR2_SDRAM	DDR_SDRAM	-	-
FPGA	Arria GX	Stratix III	Virtex-5 FX	Stratix III	Virtex-6
Clock (Internal)	AD9518	AD9518	AD9516	AD9518	AD9518
Clock (External)	Yes	Yes	Yes	Yes	Yes

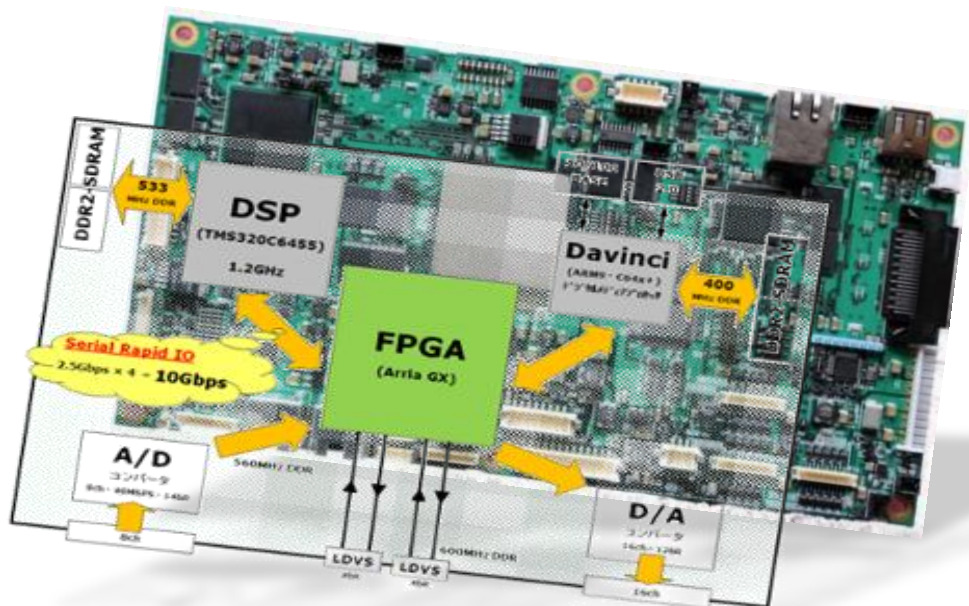
2012.11

Development Results of D/A Board

NEW

	Card 1	Card 2	Card 3	Card 4	Card 5
Resolution	16bits	16bits	16bits	16bits	16bits
Sample Rate	360MS	400MS	1GS	500MS	500MS
Channels	2ch	2ch	2ch	2ch	5ch
Card Size	Mezzanine	PCI-express	Base Board	CPCI	FMC
Data Storage	DDR2_SDRAM	DDR2_SDRAM	DDR2_SDRAM	DDR_SDRAM	-
FPGA	Stratix GX	Arria GX	StratixIII GX	Virtex-5 FX	Virtex6
Clock (Internal)	CDCM7005	AD9518	AD9518	AD9516	-
Clock (External)	Yes	Yes	Yes	Yes	Yes

2012.11

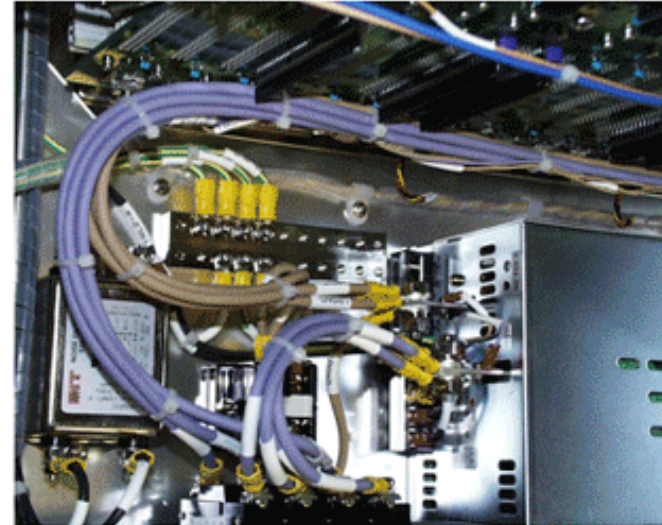
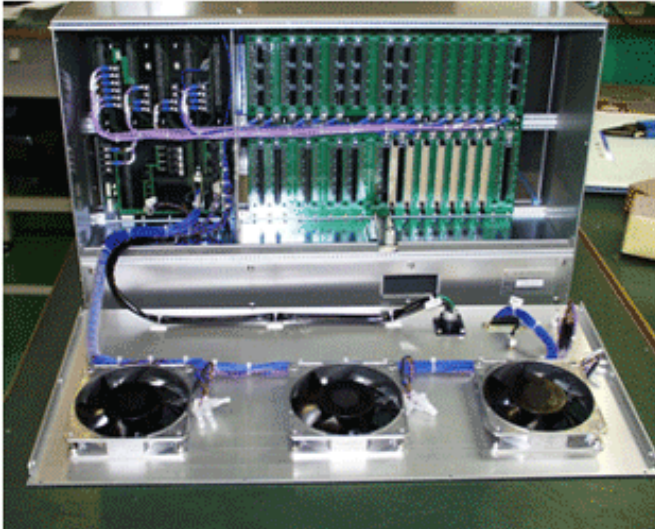


- **Davinci (TI)**
 Desital Micro Processor
DDR2-SDRAM 400MHz
 Operation frequency
ARM9 297MHz
C64x+ 594MHz
- **DSP: TMS320C6455 (TI)**
 Internal Serial RapidIO Interface
DDR2-SDRAM 533MHz
 Operation frequency **1.2GHz**
- **FPGA: Arria GX (ALTERA)**
 Internal Serial RapidIO Interface

Board size	: 223 × 125mm
Number of layers	: 12 layers
Mounting parts	: about 2,100parts

Serial RapidIO Super-high-speed, digital signal processing Interface
2.5Gbps × 4 = 10Gbps

System Racks



- Platform : cPCI, PCI, VME bus
- Specification : Standard, Custom
- DMS service : Back planes, Power supply, Cooling fan, No. of slots, Assembly, Wiring, and Test

Arbitrary Function Generator

- Power Supply : 100~240V AC (43 ~63 Hz)
- Power Consumption : 30W (TYP)
- Output Power : +4 dBm (into 50Ω)
- Channel : 2 Channel
- Resolution : 16 bits
- DC Offset : ±500 mV into 50Ω
- Frequency Accuracy : ±1.5 ppm (0~50°C)
- Frequency : 1 Hz~100 MHz (Depends on Sampling frequency)
- Harmonic Distortion : 2nd Harmonic less than -65 dBc (20 MHz, 0 dBm)
: 3rd Harmonic less than -65 dBc (20 MHz, 0 dBm)
- Waveform Generation Memory Size : Max 256M points (each channel)
- Waveform Storage Memory size (Option) : 256M points (each channel)
- Size : 238 (L) × 150 (W) × 68 (H) mm



Image Conversion Module Series



R-MONICA-1/1S Long Recording monitor camera with voice

- Camera: With IR passing filter, CMOS sensor 300,000 pixels
- Lens: Focal length: 2.34mm.
- Viewing angle 108° (H).(Other lenses are available also.)
- Infrared rays LED: Lights up at the dark place.
- Record image resolution: VGA
- Recording speed: 11 (15 / 30 fps: option)
- Voice recording: Simultaneous recording with pictures



R-NUTS-02 Image Processing Module

- NTSC signal is compressed to JPEG and transmitted by USB (2.0)
- Connectable Max 4 NTSC cameras inputs
- Function: Video switcher, Video capture and JPEG conversion
- Picture size: VGA, QVGA and QQVGA
- Size: 70mm × 70mm



R-WREC-B Image Save Module with voice by SDHC card

Recording with voice / Moving body detection / GPS

- Camera: CMOS sensor 300,000 pixels
- Picture input is NTSC composite signal
- Provide various type of board cameras
- Input voltage: +10.8V ~ +26.4V

Board Category

■ [GaGe社](#)



Equipped with mass memory High-speed A/D conversion board

■ [Sundance社](#)



DSP・FPGA・A/D etc, Variegated modular product

Parts Category

■ [NVE社](#)



Super-high-speed, Digital Isolator
High sensitivity magnetic sensor

■ [CSC社](#)



Magnetic Powder Core

■ [TNC社](#)



Toroidal coil

■ [Kocom社](#)



Image Conversion Module

■ [MCNEX社](#)

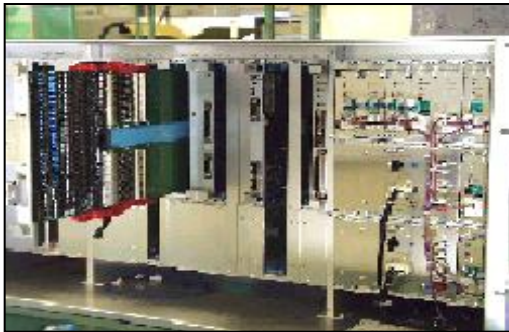


Camera and Lenz etc

SMT Assembly Line



TEST



Manufacturing Line



Manufacturing Facility



- Moved to new Facility on Apr.2001
(Extension of Engineering Facility on Apr. 2007)
- ◆ Lead free
 - ◆ N₂ No cleaning
 - ◆ Reliable Assembly with high accuracy